

Jeto L Smart Single Jet Water Meter

Electronic single-jet water meter provides accurate metering of cold and hot water consumed. The meter is designed on the basis of the MID Directive with dynamic range up to R160.

The modern construction of the meter includes a digital screen and a built-in radio module that enables remote data reading. Resistance to the external magnetic fields protects utilities from unauthorized actions and guarantees reliability of data.

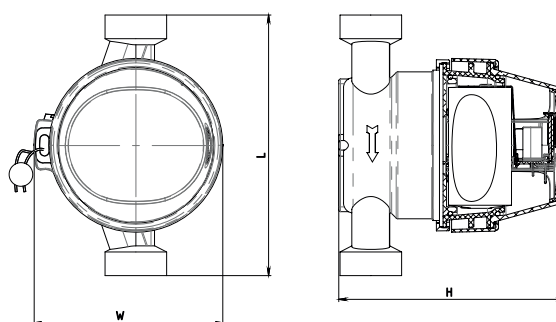
Working principle

Water passing through the water meter causes the vane wheel to turn. Thanks to the electronic counting mechanism and high-quality flow part, high accuracy characteristics of measurement are achieved, corresponding to dynamic range R80, R100, R125 and R160.

Working conditions

Temperature classes: T30, T50, T70

Pressure: up to 16 Bar



Accurate measurement

- Wide dynamic measurement range: R80, R100, R125 and R160.
- For cold and hot water: from 0,1 to +70 °C.
- When a reverse flow occurs, the data is not subtracted from the main readings, but is counted in a separate register and displayed on the screen.
- Fulfils EU metrological requirements.

Easy readings

- Integrated communication modules for data transfer: Sigfox, UNB.
- 360° rotating digital dial with LCD display for vertical or horizontal installation.

Reliability

- Resistance to magnetic fields.
- Alert messages of unauthorized actions.
- IP67 enclosure protection class.

| | | | |
|------------------|---|----|------|
| Nominal diameter | | | DN15 |
| Dimensions | L | mm | 110 |
| | D | mm | 79 |
| | H | mm | 96 |
| Weight | — | kg | 0,47 |

Technical specifications

| Metrological features | | R80 | R100 | R125 | R160 |
|---------------------------|-------------------|-------------|-------------|---------|---------|
| Minimum flow rate Q1 | m ³ /h | 0,031 | 0,025 | 0,020 | 0,016 |
| Transitional flow rate Q2 | m ³ /h | 0,05 | 0,04 | 0,032 | 0,025 |
| Constant flow rate Q3 | m ³ /h | 2,5 | 2,5 | 2,5 | 2,5 |
| Maximum flow rate Q4 | m ³ /h | 3,125 | 3,125 | 3,125 | 3,125 |
| Position | H/V | H | H | H | H |
| Temperature classes | — | T30 T50 T70 | T30 T50 T70 | T30 T50 | T30 T50 |

| Parametr | | Feature |
|--|-------------------|--------------------------------------|
| Applied standards | — | EN ISO 4064, OIML R 49 |
| Accuracy class | — | 2 |
| Resolution, m ³ /h - test mode - normal mode | m ³ /h | 0.00001 0.1 |
| Nominal diameter | — | DN15 |
| Minimum admissible working pressure, bar | bar | 0,3 |
| Maximum admissible working pressure, bar | bar | 16 |
| Pressure loss, bar: - DN15 | bar | 0.63 |
| Flow profile sensitivity class | — | U0/D0 |
| Enclosure protection class | — | IP67 |
| Operating conditions: - ambient temperature, °C - relative humidity, % | — | from 5 to 55 up to 93, condensing |
| Nominal battery voltage, V | V | 3.6 V |
| Environmental class | — | B (indoor) |
| Flow Direction | — | Forward only |
| Electromagnetic environment class | — | E2 |
| Mechanical environment class | — | M1(Directive 2014/32/EC) |